



SCHOLARS
STRATEGY NETWORK

4 Experts Available for Timely Analysis on SCOTUS *Roe v. Wade* Overturn

JUNE 24, 2022

Mandana Mohsenzadegan

Many fear that today's historic overturn of *Roe v. Wade* will have far-reaching consequences for marginalized groups, such as communities of color. For reporters writing about this ruling's impact on people in underserved communities seeking abortion, the following experts can provide commentary, context, and analysis.

PAYAL CHAKRABORTY

University of North Carolina at Chapel Hill



Chakraborty's research focuses on sexual and reproductive health. Specifically, she is interested in research that works towards ensuring that individuals have the resources, support, and agency to enact their reproductive health choices, with a specific emphasis on impacts of existing structures and policies, as well as proposed legislation, on sexual and reproductive health outcomes.

Quote: "Anti-abortion policies are harmful for reproductive health, and denial of a wanted abortion is associated with negative health, financial, and social outcomes. If policymakers want to promote public health and the health of their constituents, they will expand access to reproductive health care, including abortion services, rather than further restricting access."

WHITNEY S. RICE

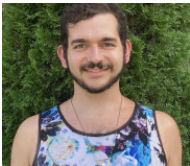
Emory University



Rice's work is devoted to the study of social and structural factors that impede or enable equity in sexual and reproductive health outcomes, care delivery, and scholarship. Her research in this area has included studies of: potential effects of state-level regulation of contraceptive and abortion access, the demographic make-up and service use of people seeking abortion fund support, to understanding and shift reproductive norms and stigma.

DEREK P. SIEGEL

Old Dominion University



Siegel (they/them) studies race, class, and gender as they relate to abortion access, abortion storytelling, transgender health, and trans parenthood. Siegel's writings aim to address how activists can better support and reflect the needs of marginalized communities, basing their recommendations on extensive interview data and their own experiences as an abortion counselor.

Quote: "Some states are trying to criminalize abortion and gender-affirming care. While experts doubt the legality and feasibility of these directives, if enforced, low-income communities of color are likely to be targeted, as these communities already experience high levels of surveillance by law enforcement and other social service officials."

NISHA VERMA

Emory University



Verma is currently serving as the Darney/Landy Fellow at the American College of Obstetricians and Gynecologists with their Strategies for Healthy Equity team, and provides abortion care at Planned Parenthoods in the Delaware and Maryland areas. She is also Adjunct Assistant Professor in the Department of Gynecology and Obstetrics at Emory University.

Quote: "In my time as an OB/GYN, I have learned that no two people or pregnancies are ever the same. There is no one-size-fits-all law that can take every person, family, or medical situation into account. It is therefore important that our laws about abortion and all other components of healthcare are backed by medical science and that they allow space for doctors and patients to make the best decisions for each unique situation."